

SELF-PROTECTED LIQUID WATERPROOFING DECORATIVE FLOORS (showrooms, resorts)



The **SOUPLETHANE 5 system**, composed of a **two-component, solvent-free and odorless polyurea-urethane resin**, is applied cold. This system can be used in new construction and in rehabilitation.

It ensures **continuous waterproofing** with mechanical strength, making it ideal as a flooring for showrooms, resorts, hotels, and other lodging facilities.

CHARACTERISTICS

Chemical nature Polyurea-urethane resin (aromatic) 2-component
Mix Ratio Comp. A / Comp. B = 3/1 a volume

Solvent-free Dry Matter 100%

Color: grey, cream, others on request

Packaging: 5 kg or 13 kg pre-dosed kits

Shelf life: 12 months - From the date of manufacture and in its original unopened packaging, under cover at more than 5°C in a cool, ventilated place (frost-free)

QUALIFICATIONS

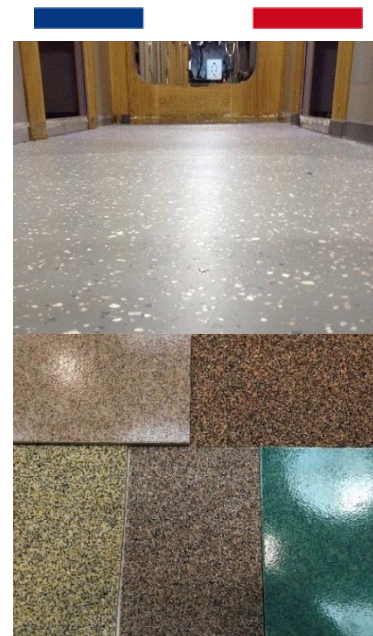
- TA Self-Protected Liquid Seal
- VERITAS (Crack Resistance)
- Fire resistance Bfl-S1

FOCUS ON THE DIFFERENT FINISHES

Non-slip finish	. Before the SOUPLETHANE is dry, sprinkle with POUDEC. . Once cured, remove the excess POUDEC . Apply a thin layer (250-300 g/m ²) of SOUPLETHANE to close the system
UV-resistant finish	. Apply ALPIC (same colour as SOUPLETHANE resin) with a roller – Consumption: 250 g/m ²
Other finishes	. Before the SOUPLETHANE is dry, sprinkle with colored quartz or CHIP FINISHES. Once cured, remove the excess

BENEFITS

- ✓ Easy application
- ✓ Quick drying 5 hours at 20°C
- ✓ 100% solids, classified as HEQ-VOC emissions
- ✓ Flash point above 200°C
- ✓ Excellent crack resistance (up to 4 mm)
- ✓ Excellent adhesion to concrete: 3.5 MPa
- ✓ Compressive strength > 110 MPa



IMPLEMENTATION

SUBSTRATE PREPARATION Check the substrate humidity, relative humidity, product and substrate ambient temperatures, and dew point. The substrate should be clean, dry and free of moisture.

PREPARATION OF THE MIXING Carefully re-homogenize component (A) before mixing - Knead the mixture A + B with a mechanical stirrer (mixer) for 40 sec.

APPLICATION: manual (notched comb/roller) or spray

CONSUMPTION :
 PU AQUEUX : 150 g/m²
 SOUPLETHANE 5: 2 kg/m²

PRACTICAL DURATION OF USE: 40 mn

RECOVERY TIME: Minimum 5h to 72h for floors

1 hour for vertical

DRYING TIME: 24 h

POSSIBLE FINISHES

Non-slip finish/ softcarpet

UV-resistant finish

Quartz color / chipped finish

FT and SDS available