

# LIQUID SEALING ANTICORROSION

## RESISTANCE TO CRACKING OF CONCRETE :

Bridging of 4.9 mm concrete induced cracks

**CHEMICAL RESISTANCE:** pH 1 to 14

**THERMAL SHOCK RESISTANCE:** 160 °C

The thixotropic version of the **SOUPLETHANE 5 COR** allows 700 g/m<sup>2</sup> roller application in a single coat **vertically**.

Viscosity – Component A: 15,000 MPa.s (23°C)

Consumption: up to 700g/m

## CHARACTERISTICS

<b>Chemical nature</b>	2-component polyurea-urethane (aromatic) resin	<b>Mix Ratio</b>	Comp. A / Comp. B = 2/1 a volume
<b>Solvent-free</b>	Dry Matter 100%		

**Colour :** grey, cream

**Packaging :** 5 and 13 kg pre-dosed kits / 33, 66, 660 kg kits

**Shelf life :** 12 months - From the date of manufacture and in its original unopened packaging, under cover at more than 5°C in a cool, ventilated place (frost-free)

## QUALIFICATIONS

- ✓ Decontaminable Class 1 standard NF T 30-901 (C.E.A.)
- ✓ Regulatory labelling of VOC emissions and compliance with the AgBB Protocol (2012)

## BENEFITS

- ✓ Very good resistance to chemical agents (pH 1 to 14)
- ✓ Mechanical impact resistance (CSTB tests)
- ✓ Resistance to thermal shocks: from -50°C to +160°C
- ✓ Resistance to concrete cracking: Bridging of cracks caused by concrete of 4.9 mm
- ✓ Ease of application
- ✓ Solvent-free, odourless
- ✓ Bisphenol A Free
- ✓ Fast commissioning

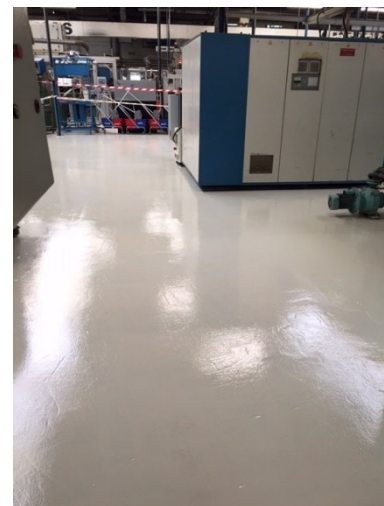
## AREAS OF EMPLOYMENT

Chemically resistant industrial soils / chemical retention / tanks storing corrosive effluents / wastewater treatment plants, digesters, sewers / anti-clogging and anti-wear coating / oil tank bottoms



KEMICA COATINGS

*Reinventing coatings*



bio-based



sustainable



eco-friendly

## IMPLEMENTATION

**NEW CONCRETE** - shot blasting or chemical attack, rinsing, drying - **AQUEOUS PU primer** (200g/m<sup>2</sup>)

**SOUPLETHANE 5 COR:** 2 mm thick (or + if high chemical aggressiveness or contact with hot fluids > 80°C)

**OLD CONCRETE** - shot blasting or chemical attack, rinsing, drying - **KEMIPOX primer** (250 g/m<sup>2</sup>):

- **SOUPLETHANE 5 COR:** thickness 2 mm (or even more if strong chemical aggressiveness or contact with hot fluids > 80°C)

### UNLOADING AREAS

- Shot blasting or chemical attack, rinsing, drying

- **KEMIPOX Primer** (250 g/m<sup>2</sup>)

- **SOUPLETHANE 5 COR:** thickness 5 mm + finish

- **POT LIFE :** 40 min.

- **RECOVERY TIME:**

- 8 hours on the ground, 2 hours vertical

- **DRYING TIME :** 24 H

*TDS and SDS available*